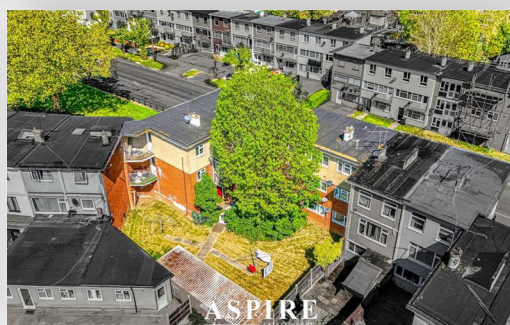
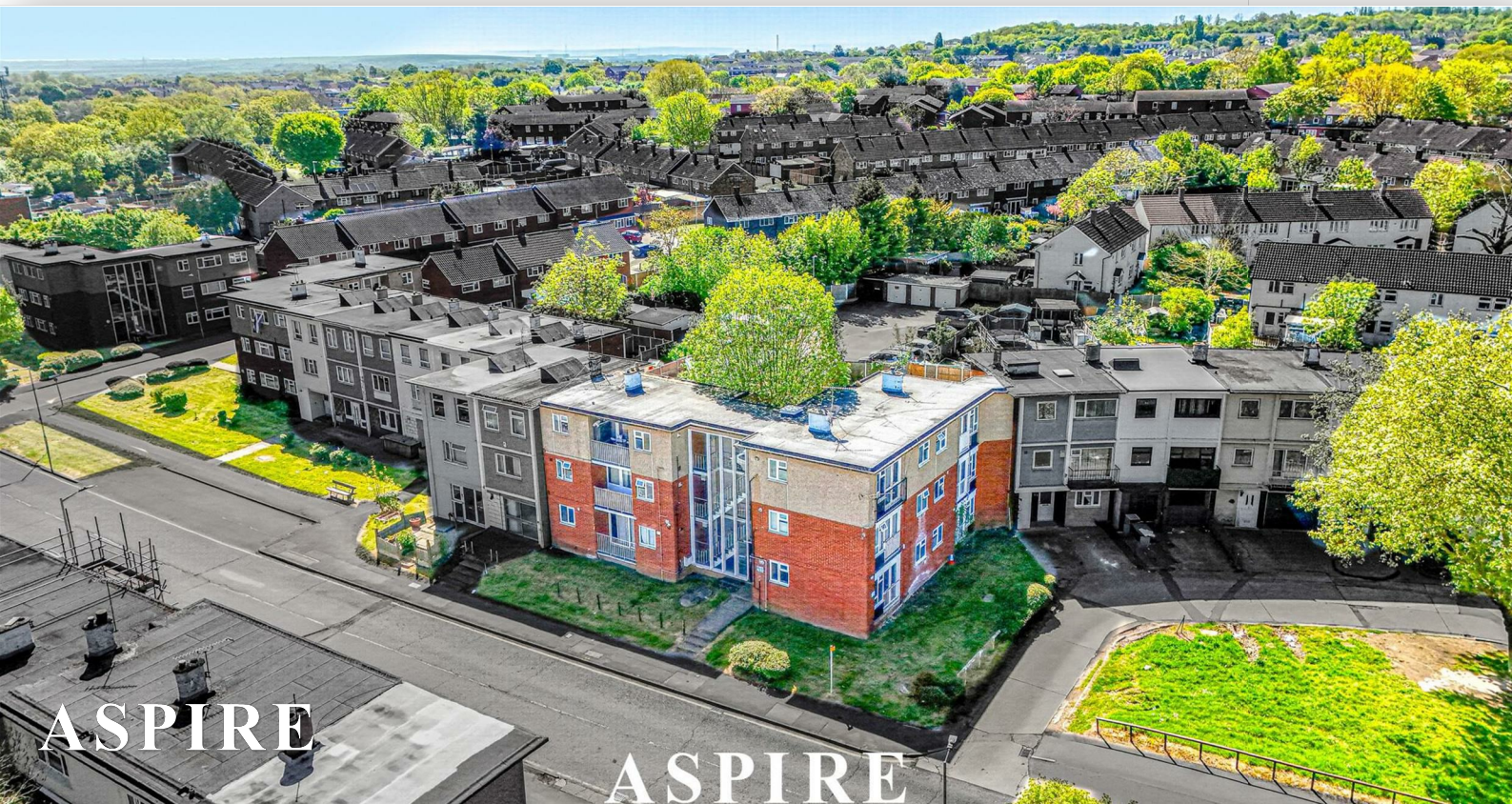


**To arrange a viewing contact us
today on 01268 777400**



Long Riding, Basildon Asking price £155,000

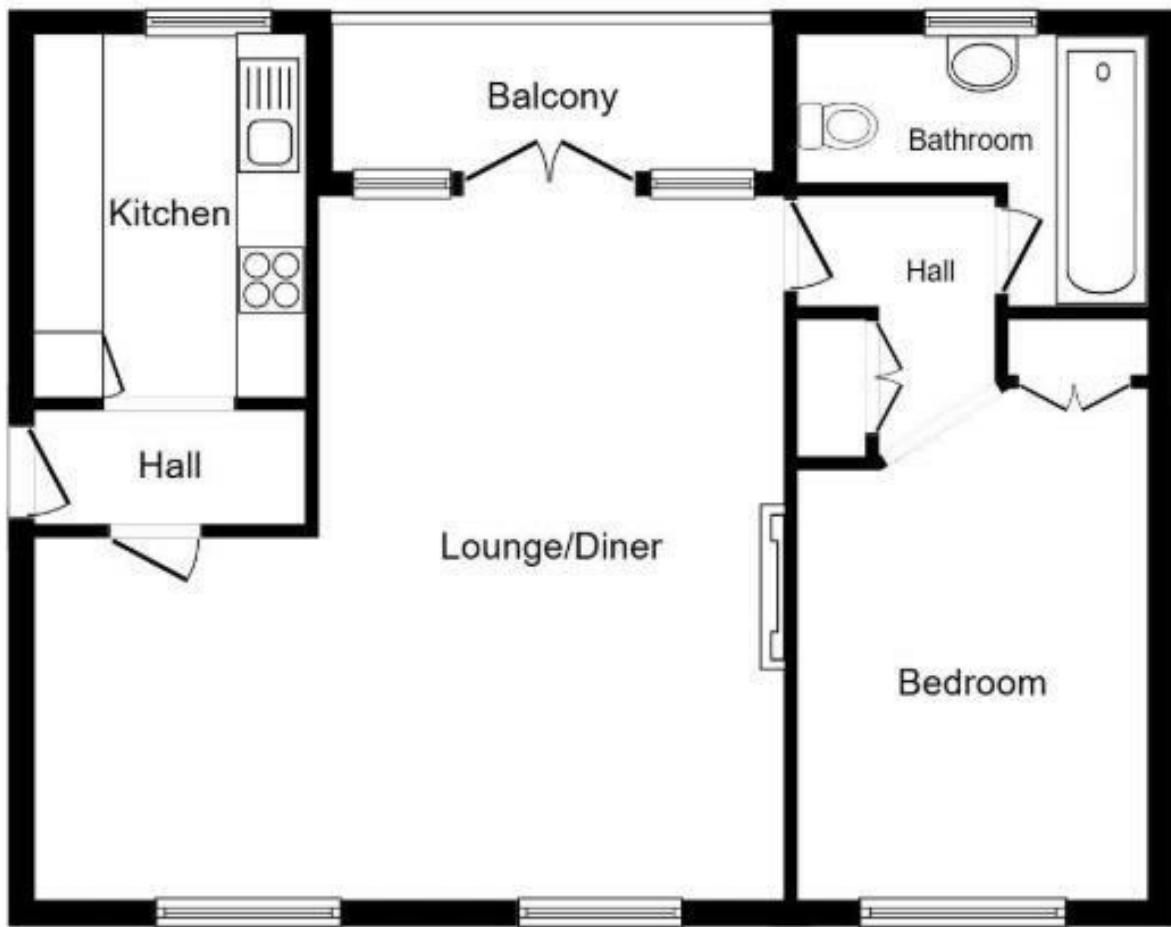
Aspire Estate Agents Basildon are delighted to present this well-positioned one-bedroom ground floor flat located in the popular Long Riding area. Ideally situated within walking distance of Basildon Town Centre and the C2C mainline train station, the property offers excellent transport links with direct access into London—perfect for commuters.

Internally, the property comprises a welcoming hallway leading to a bright and spacious living room, a fitted kitchen, a generously sized double bedroom, and a bathroom. The layout provides comfortable and practical living space throughout.

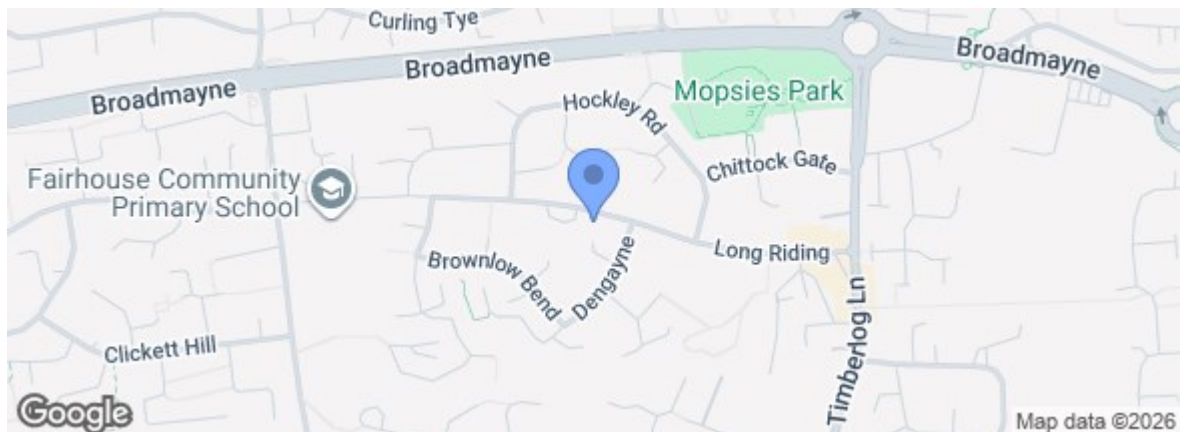
Externally, residents can enjoy access to a communal garden, along with the added benefit of a private storage shed.

This property represents an excellent opportunity for first-time buyers, investors, or anyone seeking convenient access to the town centre and transport links.

www.aspireestateagents.co.uk



Energy Efficiency Rating		Current	Potential
Very energy efficient - lower running costs			
(92 plus)	A		
(81-91)	B		
(69-80)	C		
(55-68)	D		
(39-54)	E		
(21-38)	F		
(1-20)	G		
Not energy efficient - higher running costs			
		70	73
England & Wales		EU Directive 2002/91/EC	
Environmental Impact (CO ₂) Rating		Current	Potential
Very environmentally friendly - lower CO ₂ emissions			
(92 plus)	A		
(81-91)	B		
(69-80)	C		
(55-68)	D		
(39-54)	E		
(21-38)	F		
(1-20)	G		
Not environmentally friendly - higher CO ₂ emissions			
England & Wales		EU Directive 2002/91/EC	



Under the Property Misdescriptions Act 1991 we make every effort to ensure our sales details are accurate but they are a general outline and do not constitute any part of an offer or contract. Any services, equipment and fittings have not been tested and no warranty can be given as to their condition. We strongly recommend that all the information provided be verified by your advisors and in particular, measurements required for a specific purpose such as fitted furniture or carpets. Please tell us if you have any problems and members of our branches will help either over the phone or in person. A copy of our complaints procedure is available on request. The details are issued on the strict understanding that any negotiations in respect of the property named herein are conducted through Aspire Estate Agents.